

## Available Spaces

Last Updated Thursday, November 05 2020 09:50

---

We have recently renovated spaces currently available for a wide variety of uses including office, light industrial, artist studio, etc. Please review the listings below and contact us for complete details, pricing, or to schedule a tour.

Harbor Hill Complex | 5 Division Street | Warwick, RI 02818 | USA | Tel: (401) 203-5623

---

**2,335 sq. ft. • 1st Floor • Building C • Unit C-131**



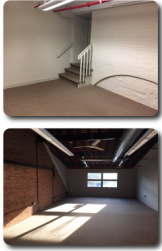
Prime Space! One of our most preferred units has recently become available. First floor unit with direct street access features large windows with high ceilings for a light-filled, airy office space. Polished hardwood floors and exposed brick give this space a beautifully refurbished mill building vibe. A kitchenette, separate area for a large conference table, and a private office space add functionality for your employees and clients. Other unique features include two recently renovated bathrooms within the unit as well as a separate room suitable for storage, computer/server room, etc. Unit is adjacent to parking lot for convenient client access.

## Available Spaces

Last Updated Thursday, November 05 2020 09:50

---

### 890 sq. ft. • 2nd Floor • Building C • Unit C-223



Bi-level Suite: Spacious, quiet, 2-room suite. Private entrance area is perfect for a reception area or office space and features a closet. Upper area is wide open space, featuring exposed brick and natural light. Suite is adjacent to a recently renovated, shared restroom & kitchenette/breakroom area. Convenient parking for easy client access.

---

### 1100 sq. ft. • 2nd Floor • Unit C-221

Mezzanine loft area; large rectangle with 3 separate rooms, perfect for artist studio, video production, photo studio, or storage.

---

### Recently Leased • 630 sq. ft. • 2nd Floor • Building C • Unit C-222

## Available Spaces

Last Updated Thursday, November 05 2020 09:50

---



Freshly painted room with a plenty of closet space AC system, lighting fixtures and more.